

# *J&J Air Systems*



## Reliability & efficiency without compromise

Rotary Screw Compressors



**NEW**



Premium compressor design

**L30 - L45**  
**L30<sup>e</sup> - L45<sup>e</sup>**  
**L30RS - L45RS**

# The next generation of efficiency

## The new L-Series from CompAir

Well known in the industry for quality and reliability, CompAir continuously develops the L-Series achieving cutting edge performance and efficiency. The new versatile range from 30 to 45 kW can be configured to meet the customers' efficiency requirements. The E-models feature a larger airend delivering highest efficiency levels. The regulated speed models save energy by matching the output to the plant air demand. All fixed speed models are available with integrated dryer option.

▶ **Pressure range**  
5 to 13 bar

▶ **Volume flow**  
1.33 to 8.67 m<sup>3</sup>/min

▶ **Motor power**  
30 to 45 kW



## Engineering excellence

Compressors are more than just a financial investment, they are a key component in ensuring that manufacturers, processors and operators receive consistent, high quality low cost air.

The screw compression element is the heart of the compressor and therefore CompAir keeps the design and manufacture in-house, using the latest CNC rotor grinding machinery, coupled with online laser technology. The resulting reliability and performance ensures that operating costs will remain low throughout the compressor's life.



**GERMAN**  
**ENGINEERING**  
& DESIGN

## Premium efficiency airends

The high output airends with slow rotational speed reduces energy costs. In addition to this, the innovative design of the fail safe shaft seal, integrated oil filter and oil regulation valve, ensures external hoses are reduced to a minimum to guarantee that the highest levels of quality and reliability are achieved. Depending on the required efficiency level this range is available with standard and premium size airend. The larger airend achieves up to 6% energy savings compared to the standard size airend.





“

Efficiency comes as standard with these compressors.

Maximum levels of efficiency can be attained with the new "E" and Regulated Speed models.

”

## Exceptional reliability and performance

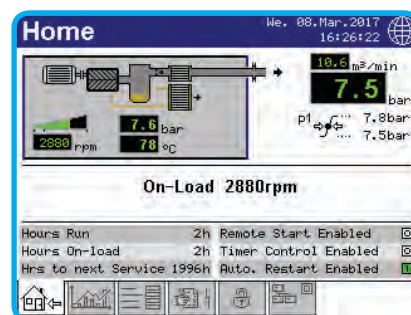
- ▶ **Large surface after cooler**  
Optimum cooling to ensure low operating and discharge temperatures.
- ▶ **Next generation separator filter**  
Ample dimensioned filtration for constant performance throughout the lifetime delivering an oil carryover of less than 3ppm.
- ▶ **High efficiency electric motor**  
The compressors are equipped with an energy saving IE4 electric motor as standard.
- ▶ **Thermostatically controlled motor driven fan**  
Highly efficient and extremely quiet fan allows compressor operation in the work place, plus the use of maximum duct length without further assistance.
- ▶ **Highest quality connections**  
Solid hoses and pipe connections with viton viciaulic couplings increase reliability and are easy to maintain.

## Delcos XL innovative touch screen compressor controller

The Delcos XL with its high resolution touch screen display is extremely user-friendly and self-explanatory. All functions are clearly structured in five main menus and are intuitively visual. The multilingual Delcos XL control system ensures reliable operation and protects your investment by continuously monitoring the operational parameters, which is essential for reducing your running costs.

### Features & functions

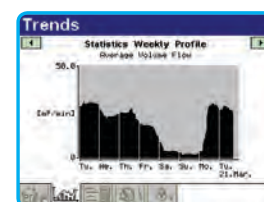
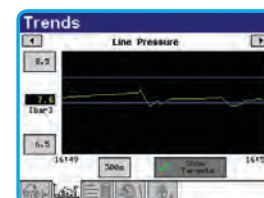
- Home Page – instant overview of the compressor status
- Real Time Clock – allows pre-setting of compressor starting/stopping
- Second Pressure Setting
- Integrated Cooling and Dryer Control
- Fault History Log – for in-depth analysis
- Remote Control via Programmable Inputs
- Auto Restart after Power Failure
- Optional Base Load Sequencing
- SD Card – stores several run characteristics



### Trend diagrams

With the ability to display detailed system analysis in the form of trend diagrams and graphs, operating parameters can be precisely set to maximise efficiency.

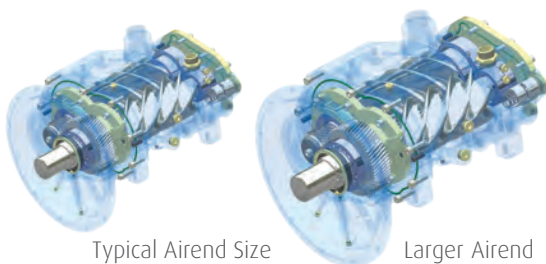
- Line / Network Pressure
- Motor Speed (Regulated Speed)
- On Load Hours / Total Hours Run & Average Volume Flow
- Weekly Average Volume Flow



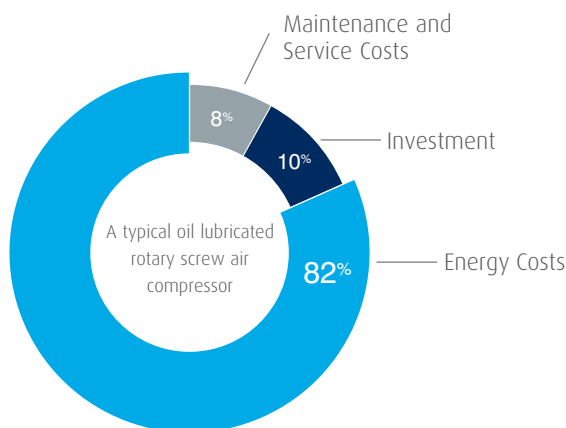
# Where efficiency matters

## An investment that pays off

The E-Models of the L-Series feature an extra large airend with optimised rotor tip speed achieving up to 6% energy savings.



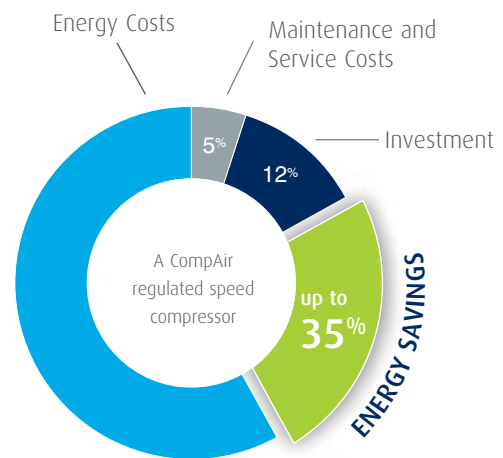
The largest cost component of a compressor is the energy to run it. The reduction of energy costs significantly impacts on the total costs of ownership.



The additional investment costs for this range of super efficient compressors will pay back in many cases in less than 12 months. The extra large airend also has a longer life expectancy.

## Regulated speed compressors

The regulated speed models can efficiently and reliably handle the varying air demand found in most plant air systems. The annual cost of ownership can be significantly reduced using regulated speed technology.



## CompAir RS features are your benefits

The L-RS Series products are designed to obtain the greatest efficiency across the entire operating range.

### Wide regulation range

No cycles means substantial energy savings.

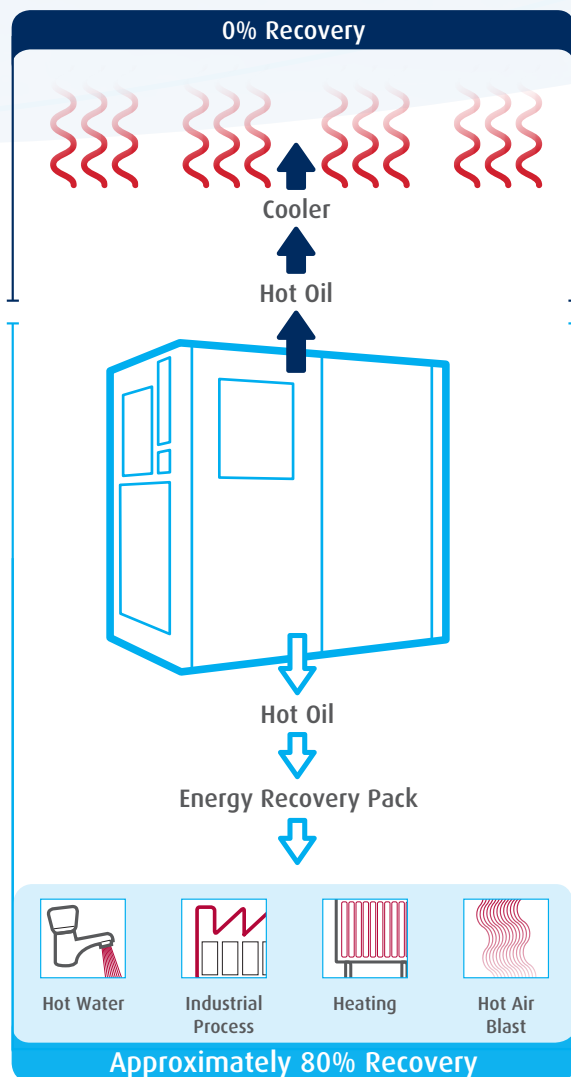
### Perfect motor - drive - airend design

High efficiency across broad flow range.

## Add further value

### Integrated heat recovery

Significant energy and costs savings can be achieved with CompAir's efficient integrated heat recovery system. It can be either factory fitted or supplied as retrofit kit including all necessary pipe-work and fittings.



Visit [www.compair.com](http://www.compair.com) to watch the heat recovery video and to access the energy savings calculation tool.

## Compressed air purification

A modern production system and process demands increasing levels of air quality. A CompAir compressed air system utilising the latest technology provides an energy efficient solution at lowest life cycle costs.

### Water Cyclone Separator X Series

Designed for efficient removal of bulk liquid contamination from compressed air.



### Compressed Air Filter CF Series

Efficient design for water, dust and particle removal.

### Condensate Drain Bekomat System

To drain compressed air condensate without loss of compressed air.

### Compressed Air Refrigerant Dryer

CompAir offer a full range of energy efficient and environmentally friendly stand alone refrigerant dryers.



### Heatless Desiccant Dryers

Series A\_XS and A\_TX.

### Heat Regenerative Desiccant Dryers

Series A\_TV and A\_RS.



### Nitrogen Generator

Designed to achieve maximum efficiency and gas quality.

### SmartAir Master Multi Compressor Controllers

Sequencers for up to 12 units.





# Protect your investment



## Assure warranty – to ensure your peace of mind!

The CompAir Assure Warranty and Service programmes will assure you up to 44,000 hours/6 years <sup>1)</sup>. It is one of the most generous warranties available in the industry affording you total piece of mind.

### Your benefits:

- The Assure warranty is totally free to the compressor owner <sup>2)</sup>
- The CompAir authorised service provider will deliver a guaranteed quality of service
- An Assure service agreement underpinning the warranty will enable accurate maintenance, budgeting and cost of ownership
- The use of genuine CompAir parts and lubricants will maximise compressor life and efficiency

<sup>1)</sup> whichever is the soonest

<sup>2)</sup> subject to Terms & Conditions

## Compact design – easy installation

The small footprint reduces the space required for installation.

## Easy servicing

The design of these packages ensures that the service points are readily accessible. The enclosure side doors are hinged and removable to allow complete access to all service points. The reduced number of moving parts further lowers the maintenance costs.

## CompAir genuine spare parts

### Enjoy complete peace of mind.

Genuine CompAir parts and lubricants ensure that compressed air plant reliability and efficiency is maintained at the highest standards. CompAir spare parts and lubricants are distinguished by:

- Long service life, even under harshest conditions
- Minimum losses contributing to energy savings
- High reliability improves plant up-time
- Products manufactured with the strictest Quality Assurance Systems



## CompAir L-Series – Technical Data

### L30 – L45 Fixed speed

Compressor Model	Nominal Pressure [bar g]	Drive Motor [kW]	FAD <sup>1)</sup> [m³/min]	Noise Level <sup>2)</sup> [dB(A)]	Weight [kg]	Dimensions L x W x H [mm]	Integrated Dryer Option	Pressure dew point <sup>3)</sup> [°C]	Weight [kg]
L30	7.5	30	5.75	67	905	1722 x 920 x 1659	F30E (L30F)	3	110
	10		5.01						
	13		4.27						
L37	7.5	37	7.00	68	948	1722 x 920 x 1659	F45E (L37F)	3	120
	10		6.17						
	13		5.30						
L45	7.5	45	8.00	69	970	1722 x 920 x 1659	F45E (L45F)	4	120
	10		7.00					3	
	13		6.11					3	

### L30<sup>e</sup> – L45<sup>e</sup> Efficiency version, fixed speed

Compressor Model	Nominal Pressure [bar g]	Drive Motor [kW]	FAD <sup>1)</sup> [m³/min]	Noise Level <sup>2)</sup> [dB(A)]	Weight [kg]	Dimensions L x W x H [mm]	Integrated Dryer Option	Pressure dew point <sup>3)</sup> [°C]	Weight [kg]
L30 <sup>e</sup>	7.5	30	6.00	67	990	1722 x 920 x 1659	F30E (L30F)	3	110
	10		5.17						
L37 <sup>e</sup>	7.5	37	7.12	67	1033	1722 x 920 x 1659	F45E (L37F)	3	120
	10		6.31						
L45 <sup>e</sup>	7.5	45	8.67	67	1055	1722 x 920 x 1659	F45E (L45F)	4	120
	10		7.54					3	

### L30RS – L45RS Regulated speed

Compressor Model	Nominal Pressure [bar g]	Drive Motor [kW]	FAD <sup>1)</sup> Min - Max [m³/min]	Noise Level <sup>2)</sup> at 70% load [dB(A)]	Weight [kg]	Dimensions L x W x H [mm]
L30RS	5 - 10	30	1.33 – 5.53	66	925	1722 x 920 x 1659
L37RS	5 - 13	37	1.41 – 6.90	67	952	1722 x 920 x 1659
L45RS	5 - 13	45	1.41 – 8.02	70	974	1722 x 920 x 1659

<sup>1)</sup> Data measured and stated in accordance with ISO 1217, Edition 4, Annex C and Annex E and the following conditions:  
Air Intake Pressure 1 bar a, Air Intake Temperature 20°C, Humidity 0 % (Dry).

<sup>2)</sup> Measured in free field conditions in accordance with ISO 2151, tolerance ± 3dB (A).

<sup>3)</sup> Data refer to ISO 7183, working pressure of 7 bar, inlet temperature 35°C and ambient temperature 25°C.



# Global experience – truly local service



Our Sales and Service trade counter in High Wycombe. With over 200 years of engineering excellence, the CompAir brand offers an extensive range of highly reliable, energy efficient compressors and accessories to suit all applications.

An extensive network of dedicated CompAir Sales companies and distributors across all continents provide global expertise with a truly local service, ensuring our advanced technology is backed up with the right support.

As part of the worldwide Gardner Denver operation, CompAir has consistently been at the forefront of compressed air systems development, culminating in some of the most energy efficient and low environment impact compressor on the market today, helping customers achieve or surpass their sustainability targets.

## CompAir compressed air product range

### Advanced Compressor Technology

#### Lubricated

- Rotary Screw
  - > Fixed and Regulated Speed
- Piston
- Portable

#### Oil-Free

- Water Injected Screw
  - > Fixed and Regulated Speed
- Two Stage Screw
  - > Fixed and Regulated Speed
- Piston
- High Speed Centrifugal - Quantima®
- Rotary Scroll

### Complete Air Treatment Range

- Filtration
- Refrigerant and Desiccant Dryer
- Condensate Management
- Heat of Compression Dryer
- Nitrogen Generator

### Modern Control Systems

- CompAir DELCOS Controllers
- SmartAir Master Sequencer

### Value Added Services

- Professional Air Audit
- Performance Reporting
- Leak Detection

### Leading Customer Support

- Custom Engineered Solutions
- Genuine CompAir Parts and Lubricants



## J&J Air Systems



J&J Air Systems  
Sands Industrial Estate,  
High Wycombe  
Bucks HP12 4HJ  
United Kingdom

Customer Service: 0800 027 8442  
Telephone: 01494 530291  
International: +44 (0)1494 530291  
Fax: +44 (0)1494 463062

[sales@JJAirSystems.co.uk](mailto:sales@JJAirSystems.co.uk)  
[www.JJAirSystems.co.uk](http://www.JJAirSystems.co.uk)