



Bambi Operators Handbook

BB Series

BAMBI

Operating Manual

Your Bambi Air Compressor is a precision engineered product. By following these simple steps you will ensure years of trouble free use.

Parts & Service are available from your Bambi dealer. It is important to quote Model, Type & Serial Number in all communications. The substitution of parts not manufactured nor approved by Bambi can impair performance, service life and create potential mechanical or personnel hazards and will invalidate your warranty. Bambi reserves the right to modify the contents of this operating booklet without notice and the information is in no way binding on the company.

Warranty

Provided the operating instructions have been followed and the compressor has been properly maintained, Bambi compressors are guaranteed against faulty workmanship for a period of 1 year. The air receiver is guaranteed for 3 years. The guarantee does not cover damage by misuse, incorrect parts or service. Contact Bambi Air Compressors or your retailer for further information.

Safety Precautions

What you **must** do:

- Read these instructions before using your air compressor
- Ensure the compressor has been installed, electrically connected and piped in by a properly qualified person
- Ensure the compressor is kept upright at all times

What you **must not** do:

- Do not attempt any maintenance on the compressor until it has been isolated from the power supply
- Do not attempt any work on the compressor until the air receiver and pipe work systems are depressurised.
- Compressed air is dangerous if misused and can prove fatal. Avoid any bodily contact with compressed air
- During operation the motor will become quite hot to the touch. Avoid contact to prevent burns. At no time must the oil temperature be allowed to exceed 100°C
- Never tamper with the pressure relief valve
- Never change the oil when the compressor is still warm. Take necessary precautions to avoid contact with the skin

Bambi BPB1110S compressor oil does not contain hazardous components and is not required to be labelled dangerous according to the Classification, Packaging and Labelling of dangerous substances regulation (CPL) Regulation 1984.

Siting The Compressor

What you **must** do:

- Provide adequate protection from the weather
- Site the compressor level in both plains
- Larger models are heavy, ensure the surface has sufficient load bearing capacity
- Allow access for maintenance all around the compressor
- Site in a dry area, avoiding damp or humid conditions. The site must be dust free, well ventilated and have a cool ambient temperature. 35°C should be allowable ambient. Protect from frost, minimum operating temperature 0°C

What you **must not** do:

- Enclose the compressor or allow hot air generated by the motor to re-circulate around the compressor

Electrical Connections

All 220/240 volt compressors are supplied with a moulded plug in accordance with national standards. Never remove the moulded plug.

Wired in accordance with European Standard –
Blue = neutral Brown = live Yellow & Green Stripe = earth

Operation

Refer to exploded parts diagrams and illustrations when reading this section.

Oil Level

Your Bambi Compressor is shipped pre-filled with oil for your convenience. Before use, please let the compressor stand for 20-30 minutes to let the oil settle in the sump. The bottle of oil supplied is to be used for topping up the compressor as and when required - see fig.1 for more detail.

Air Filter

The plug on the air filter intake must be removed and the air filter fitted before use - see fig. 9 and fig. 10 on the card attached to compressor.

Your airline should be fitted to the outlet of the filter regulator.

Always use Bambi BPB1110S compressor oil. Failure to do so will invalidate your warranty.

Starting & Stopping

Plug the compressor into an outlet socket of nominal voltage and fitted with a 13 amp fuse.

Switch the compressor on using the on/off control on top of the pressure switch. - *see fig 3*

The compressor will start running and automatically switch off at the preset pressure.

As air is used, the pressure drops and the motor will restart at the preset pressure. Approx 2 Bar differential.

Note!
Never tamper with the pressure switch settings; these are factory set.

Adjusting Outlet Pressure
Use the filter regulator to adjust the outlet pressure. The 40mm pressure indicates the selected pressure. To increase line pressure, rotate the black knob on top of the filter regulator in a clockwise manner; to decrease turn anti clockwise. It is possible to lock the setting by pushing the knob down until it “clicks” home – *see fig 4*

Routine Maintenance

Draining the Air Receiver

Drain condensate from air receiver at a pressure of no more than 2 Bar. Slowly open the drain tap provided to allow water to flow out – *see figs 7 & 8*
Close drain tap when all water has drained off.
Do not overtighten; this will damage the tap seal.
Automatic drains where fitted do not require draining, however the drain bottle will require emptying.

Topping up oil

Ensure the oil level in the sight glass is at or above the halfway point, top up with Bambi BPB1110S oil if required until oil fills sight glass - *see fig 2*

Draining the Filter/Regulator Unit

Slowly open the drain screw provided to allow water to flow out.
Close drain screw when all water has drained off - *see fig 5*

Note !
Waste condensate must be handled in accordance with national environmental rules.

Check Pressure Relief Valve

Ensure the air receiver is not pressurised. Unscrew the knurled end of the pressure relief valve until an audible “click” is heard. Retighten without using excessive force – *see fig 6*

Technical

The compressor has a maximum 50% duty cycle. The motor must never be allowed to run continuously; otherwise it will overheat and may become damaged.

Do not ignore air leaks. All air connections must be leak free to prevent the compressor from over heating.

The compressor is fitted with a thermal overload. In the event of excessive temperature, the motor will switch off. After about 50 minutes when the motor has cooled, it will automatically reset.

Note!
You must find the cause of the overload and rectify this before continuing to use the compressor.

Check for -

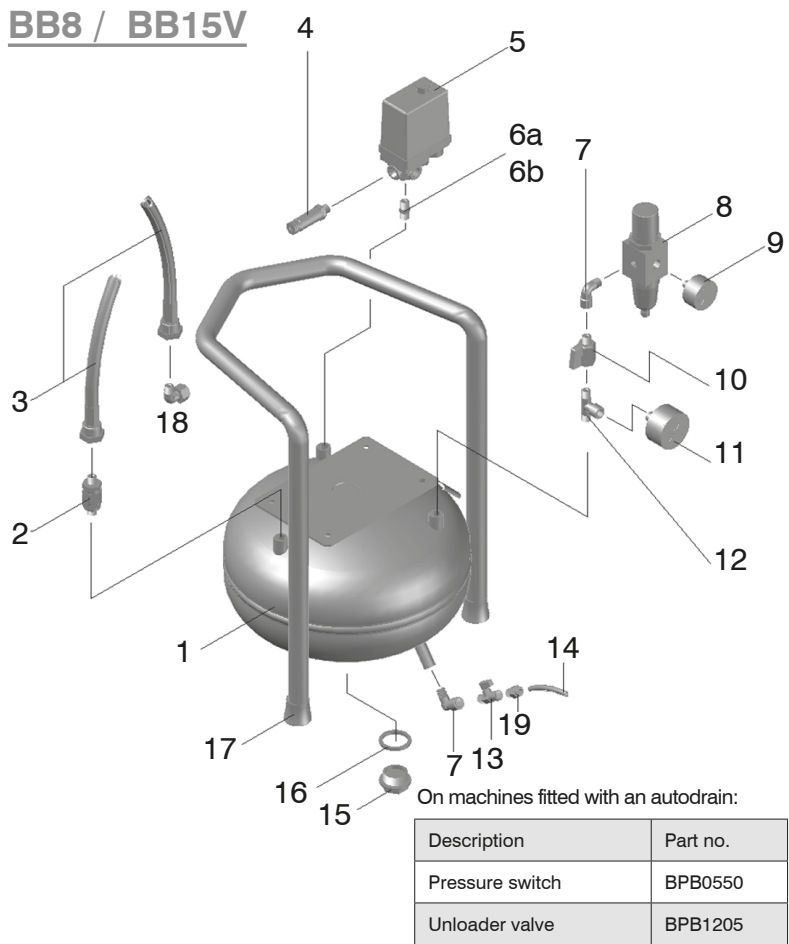
- Drain tap not closed properly
- Air leaks on the pneumatic fittings
- Compressor not the correct size for the work load

Preventative Maintenance

Operation	Daily	Weekly	Monthly	Annually
Drain Air Receiver < 15 Litres	•			
Drain Air Receiver > 15 Litres		•		
Drain Filter Regulator			•	
Check Oil Level		•		
Change Oil				•
Replace Air Intake Filter				•
Replace Filter Regulator Element				•
Check Pressure Relief Valve Activation				•
Above are to be considered minimum frequency				

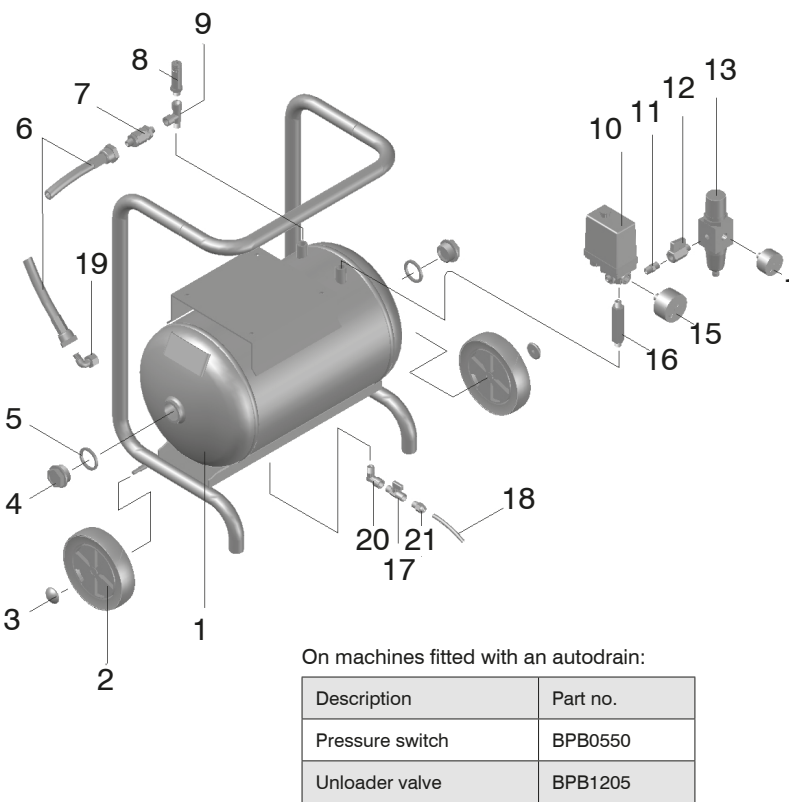
Unit Diagrams

BB8 / BB15V



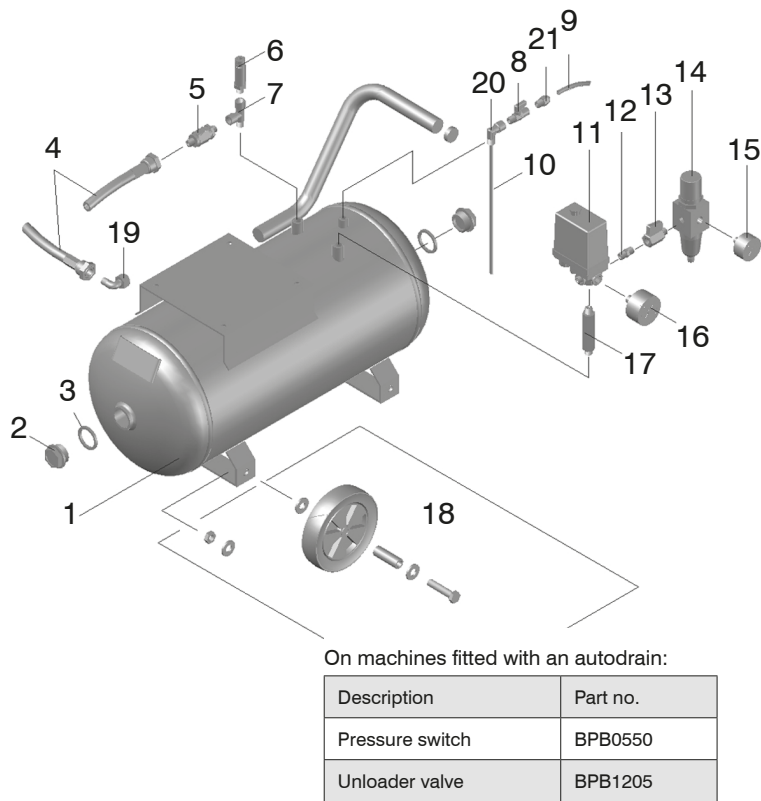
Ref No.	Description BB8/BB15V	Part no.
1	Air receiver - 8 / 15 litre	BPB0468 / 0470
2	Non return valve	BPB1086
3	Delivery hose - 200mm	BPB1102
4	Relief valve	BPB1084
5	Pressure switch	BPB1074
6a [BB8]	1/4 x 1/4 connector	BPB1284
6b [BB15V]	1/4 x 1/4 connector	BPB1078
7	1/4 MF elbow	BPB1139
8	Filter regulator unit	BPB1080
9	40mm pressure gauge	BPB1077
10	On/off valve	BPB1079
11	50mm pressure gauge	BPB1081
12	1/4 MFM Tee	BPB1095
13	On/off valve	BPB0895
14	6mm Drain tube	BPB0203
15	Inspection plug	BPB0243
16	Inspection plug seal	BPB0502
17	Rubber foot	BPB0247
18	Outlet elbow	BPB1283
19	1/4 - 6mm adapter	BPB0043

BB15



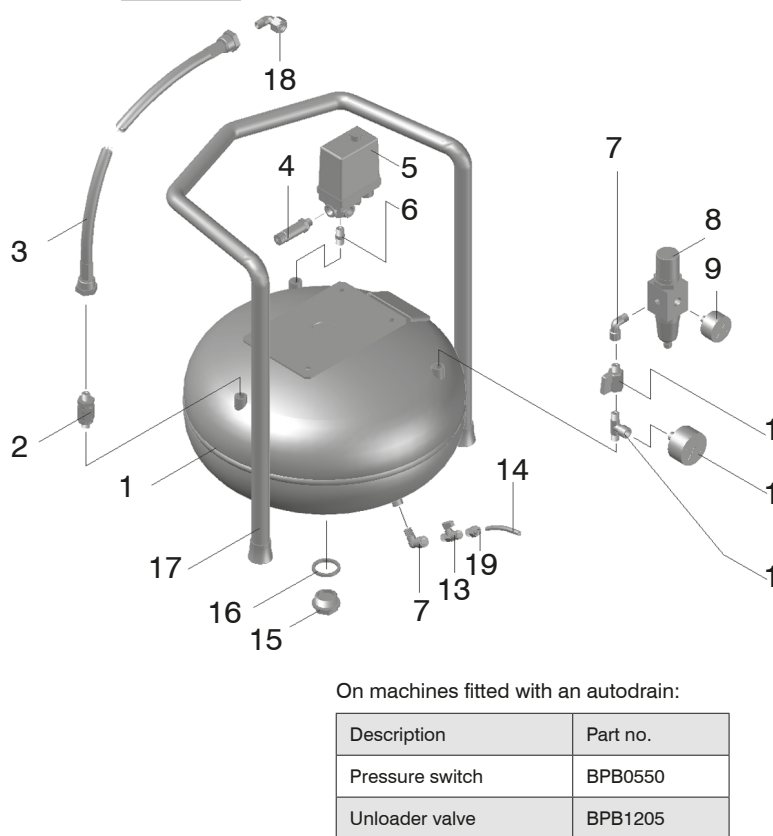
Ref No.	Description	Part no.
1	Air receiver - 15 litre	BPB0469
2	Wheel	BPB1144
3	Wheel cap	BPB1108
4	Inspection plug	BPB0243
5	Inspection plug seal	BPB0502
6	Delivery hose - 300mm	BPB1087
7	Non return valve	BPB1086
8	Relief valve	BPB1084
9	1/4 tee	BPB1109
10	Pressure switch	BPB1074
11	1/4 x 1/4 connector	BPB1078
12	On/off valve	BPB1079
13	Filter regulator unit	BPB1080
14	40mm pressure gauge	BPB1077
15	50mm pressure gauge	BPB1081
16	1/4 extension piece	BPB0152
17	On/off valve	BPB0895
18	6mm Drain tube	BPB0203
19	Outlet elbow	BPB1283
20	1/4 MF Elbow	BPB1139
21	1/4 - 6mm Adapter	BPB0043

BB24



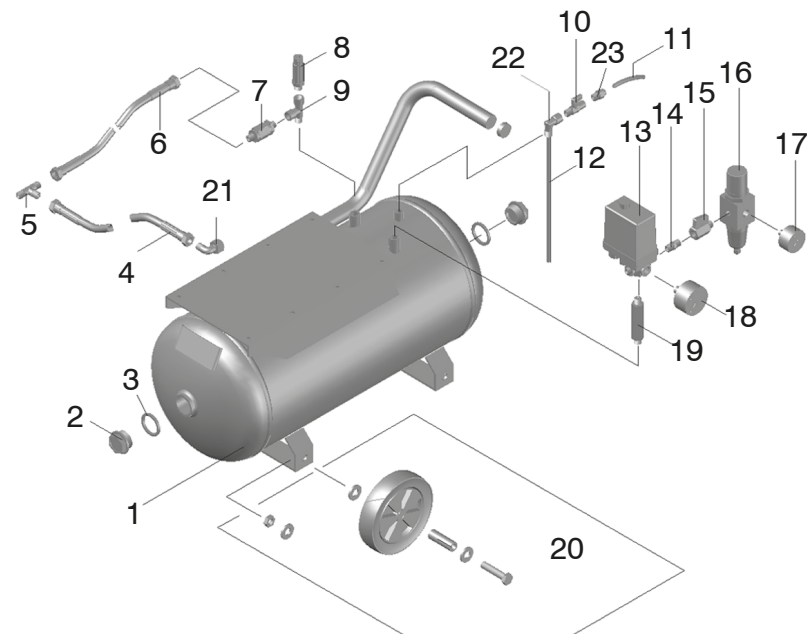
Ref No.	Description	Part no.
1	Air receiver - 24 litre	BPB0471
2	Inspection plug	BPB0243
3	Inspection plug seal	BPB0502
4	Delivery hose - 300mm	BPB1087
5	Non return valve	BPB1086
6	Relief valve	BPB1084
7	1/4 tee	BPB1109
8	On/Off Valve	BPB0895
9	6mm Drain tube	BPB0203
10	Siphon tube	BPB0536
11	Pressure switch	BPB1074
12	1/4 x1/4 connector	BPB1078
13	On/off valve	BPB1079
14	Filter regulator unit	BPB1080
15	40mm pressure gauge	BPB1077
16	50mm pressure gauge	BPB1081
17	1/4 extension piece	BPB0152
18	Wheel kit	BPB0157
19	Outlet elbow	BPB1283
20	1/4 MF Elbow	BPB1139
21	1/4 - 6mm Adapter	BPB0043

BB24V



Ref No.	Description	Part no.
1	Air receiver - 24 litre verticle	BPB0472
2	Non return valve	BPB1086
3	Delivery hose - 200mm	BPB1102
4	Relief valve	BPB1084
5	Pressure switch	BPB1074
6	1/4 x 1/4 connector	BPB1078
7	1/4 MF elbow	BPB1139
8	Filter regulator unit	BPB1080
9	40mm pressure gauge	BPB1077
10	On/off valve	BPB1079
11	50mm pressure gauge	BPB1081
12	1/4 tee	BPB1095
13	On/Off Valve	BPB0895
14	6mm Drain tube	BPB0203
15	Inspection plug	BPB0243
16	Inspection plug seal	BPB0502
17	Rubber foot	BPB0247
18	Outlet elbow	BPB1283
19	1/4 - 6mm adapter	BPB0043

BB24D



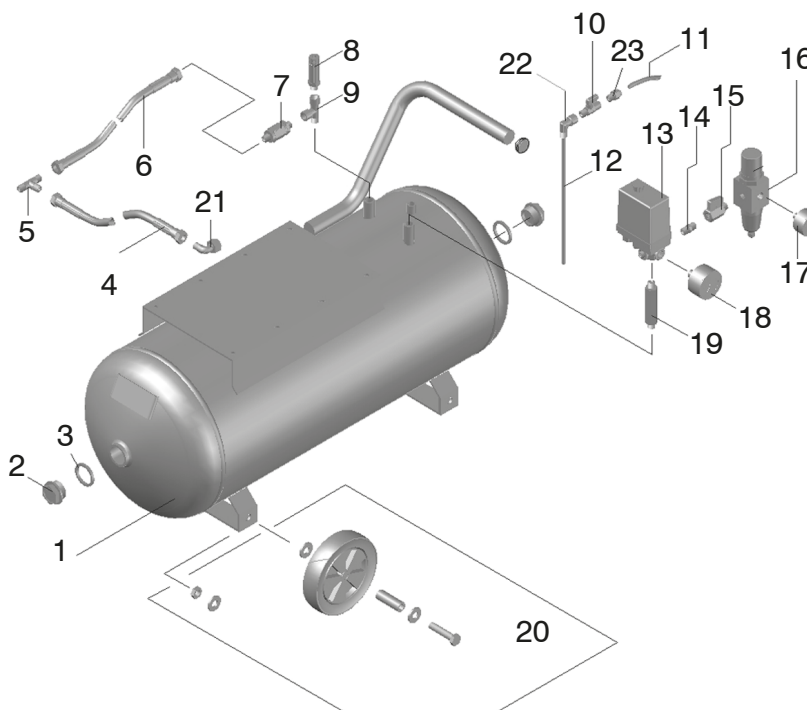
On machines fitted with an autodrain:

Description	Part no.
Pressure switch	BPB0550
Unloader valve	BPB1205

22	1/4 MF Elbow	BPB1139
23	1/4 - 6mm Adapter	BPB0043

Ref No.	Description	Part no.
1	Air receiver - 24 litre	BPB0473
2	Inspection plug	BPB0243
3	Inspection plug seal	BPB0502
4	Delivery hose - 200mm	BPB1102
5	1/4 tee	BPB1285
6	Delivery hose - 200mm	BPB1102
7	Non return valve	BPB1086
8	Relief valve	BPB1084
9	1/4 tee	BPB1109
10	On/Off Valve	BPB0895
11	6mm Drain tube	BPB0203
12	Siphon tube	BPB0536
13	Pressure switch	BPB1074
14	1/4 x 1/4 connector	BPB1078
15	On/off valve	BPB1079
16	Filter regulator unit	BPB1080
17	40mm pressure gauge	BPB1077
18	50mm pressure gauge	BPB1081
19	1/4 extension piece	BPB0152
20	Wheel kit	BPB0157
21	Outlet elbow	BPB1283

BB50D

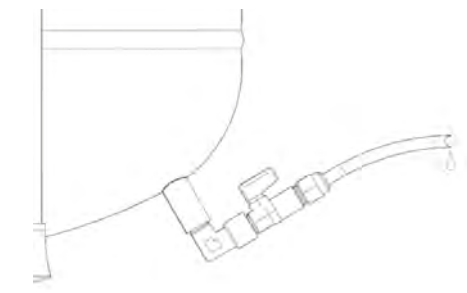
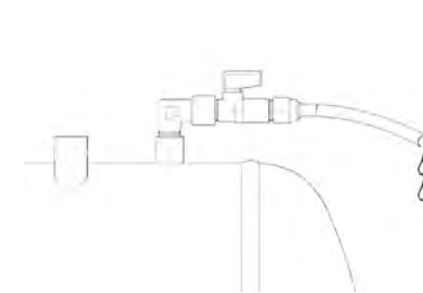
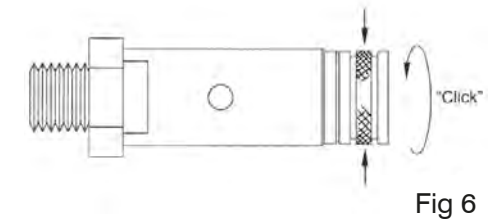
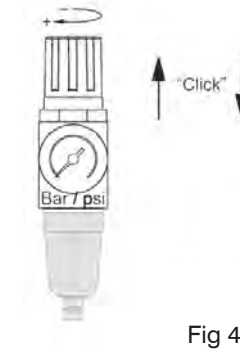
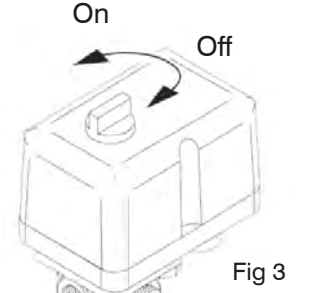
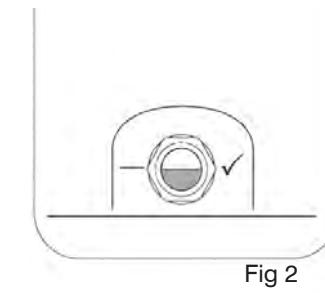
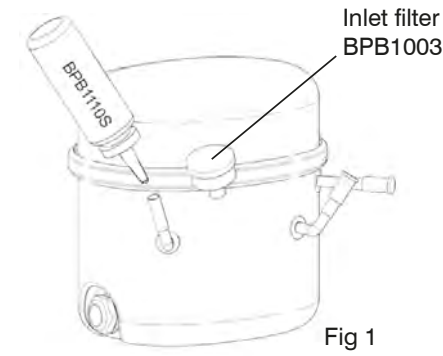


On machines fitted with an autodrain:

Description	Part no.
Pressure switch	BPB0550
Unloader valve	BPB1205

22	1/4 MF Elbow	BPB1139
23	1/4 - 6mm Adapter	BPB0043

Ref No.	Description	Part no.
1	Air receiver - 50 litre	BPB0474
2	Inspection plug	BPB0243
3	Inspection plug seal	BPB0502
4	Delivery hose - 200mm	BPB1102
5	1/4 tee	BPB1285
6	Delivery hose - 300mm	BPB1087
7	Non return valve	BPB1086
8	Relief valve	BPB1084
9	1/4 tee	BPB1109
10	On/Off Valve	BPB0895
11	6mm Drain tube	BPB0203
12	Siphon tube	BPB0034
13	Pressure switch	BPB1074
14	1/4 x 1/4 connector	BPB1078
15	On/off valve	BPB1079
16	Filter regulator unit	BPB1080
17	40mm pressure gauge	BPB1077
18	50mm pressure gauge	BPB1081
19	1/4 extension piece	BPB0152
20	Wheel kit	BPB0157
21	Outlet elbow	BPB1283



Technical Specification

Budget Pump Specification

Motor Kw / Hp	0.37 / 0.5
Voltage	220/240
Frequency Hz	50
Amps	3
Watts	660
Displacement l/min	50



Global experience truly local service

We serve the following Medical, Industrial and Service sectors.....

Agriculture

Automotive

Aviation

Beveridge

Defence

Dental

Education

Energy

Engineering (Civil + Mechanical + Electrical)

Emergency Services (Police + Fire + Ambulance)

Food

Government

Healthcare

Manufacturing

Medical

Oil + Gas

Renewable Energies

Road + Rail

Science

TV + Film + Arts

Utilities

Waste Services

J&J Air Systems



Avetta

J&J Air Systems, Sands Industrial Estate, High Wycombe, Bucks HP12 4HJ, United Kingdom.

Customer Service: 0800 027 8442

Telephone: 01494 530291

International: +44 (0)1494 530291

sales@JJAirSystems.co.uk

www.JJAirSystems.co.uk

